



Click fig. 1-3, press OK key, and then the screen will display the menu as shown in fig.1-3. It shows the initial value of ECU. Users can do match according to the configuration of air bag. For example, the initial value of Pre-tensioning seat belt is YES which is not included in configuration of vehicle. See fig.1-4. Click Modify, and then select the option needs to match. See fig.1-5 & fig. 1-6.

Configuration(control unit)			
Pre-tensioning seat belt			
Driver' s air bag			
Passenger air bag			
Disarming switch			
Front side air bags			
Side airbags screens			
PAGE UP		PAGE DOWN	
HOME	BACK	PRINT	HELP
Start			

fig.1-5

Configuration Value			
YES			
NO			
PAGE UP		PAGE DOWN	
HOME	BACK	PRINT	HELP
Start			

fig.1-6

Now, users can click Program to write information to ECU.

Configuration(control unit)			
Pre-tensioning seat belt	YES		
Driver' s air bag	YES		
Passenger air bag	YES		
Disarming switch	YES		
Front side air bags	YES		
Side airbags screens	NO		
PAGE UP	PAGE DOWN	PRINT	
Modify	<b>Program</b>	BACK	
Start			

fig.1-7

Configuration(control unit)			
switch off for several seconds then switch on again.			
OK			
Start			

fig.1-8

Writing information to ECU needs to switch off the unit. See fig.1-8. Click OK to

enter the writing information menu again. See fig. 1-9.

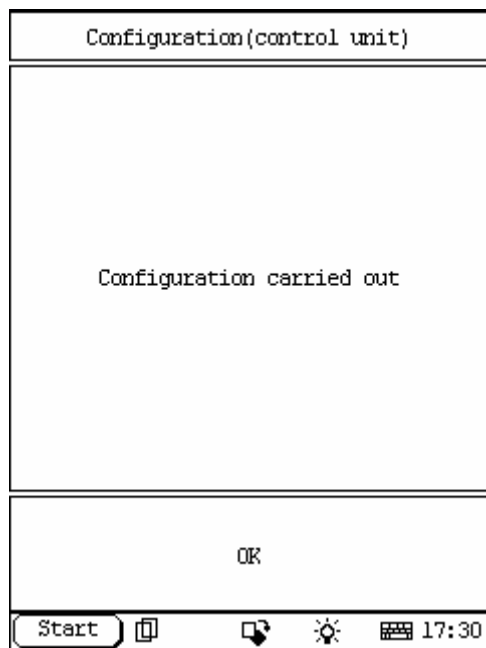


fig.1—9

The operation is just to rewrite and re-read ECU. If the configuration is not match to actual condition, certain permanent fault code will occur till matching is correct. Then, the permanent fault code will turn to temporary fault code. Now, you can clear fault with clear fault code function.